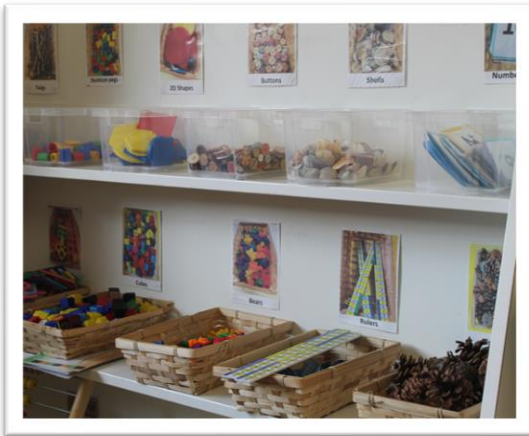


# A Day in the Life Of...

RECEPTION



In Reception, we deliver an exciting and varied, play-centred curriculum, based on the Early Years Foundation Stage (EYFS), across the 17 areas of learning. In everything we do, we:

- Promote equality of opportunity and anti-discriminatory practice.
- We provide early intervention for those children who require additional support.
- Work in partnership with parents and develop links in the local community.
- Plan challenging and stimulating learning experiences, based on the individual child, informed by observation and assessment.
  - Provide learning experiences developed from child-led ideas.
  - Build strong relationships with the children in our care.
- Provide nurturing and inspiring indoor and outdoor learning environments.
- Inspire a love of learning and independence that will remain with them throughout school.





## **A typical day looks like this...**

### **8.35-8.45am**

Children arrive, put their belongings away and complete a SODA  
(Start Of The Day Activity)

### **8.45am**

Registration takes place and we complete our daily calendar

### **9am**

We complete phonics on the carpet, then complete our phonics activity booklets

### **9.20am**

Continuous provision - where the children have access to all 3 classes and the outdoor area, learning through their play. Sometimes they may have a task to complete with an adult.

### **10.40am**

Tidy up time – we encourage the children to tidy up their activity equipment after themselves.

### **10.50am**

Maths takes place as a whole class followed by a shared read and getting ready for lunch!

### **11.25am**

Lunch time – the children are taken across to the hall to choose their dinner or to be seated for eating their packed lunches.

### **12.30pm**

The children return to class for a whole class literacy input based around a story.

### **12.50pm**

Continuous provision as detailed above and some groups will complete a writing task with an adult.

### **1.30pm**

Handwriting lesson and practice time.

### **1.45pm**

Continuous provision.

### **2.20pm**

Tidy up time.

### **2.30pm**

We complete a subject-specific carpet session with the children  
(e.g. PSHE, Music, R.E)

### **2.50pm**

Story time and then the children begin to collect their belongings for hometime.

## PUPIL VOICE

We're proud to say that our children really enjoy their time in Reception.

Here's some recent feedback from our Reception children.

"We do reading and maths – I love counting to 10"



"I like to go outside and play with my best friends!"





"We all play together in the home corner and I love going upstairs to Owl Club after school."



"We do phonics every day and put sounds together."



"I like doing everything in the classroom –  
we play in different parts and make fairy forests together!"



"I love the lunch hall and having lunch with my friends."



Take a look around...

