

# 'What's On Your Mind Manchester?'

Artists Invitation for Hats Exhibited at...

**The Manchester Museum.**



A Building the Bridge Project by Stanley Grove Primary Academy

**Manchester 'City of the Big Draw'**



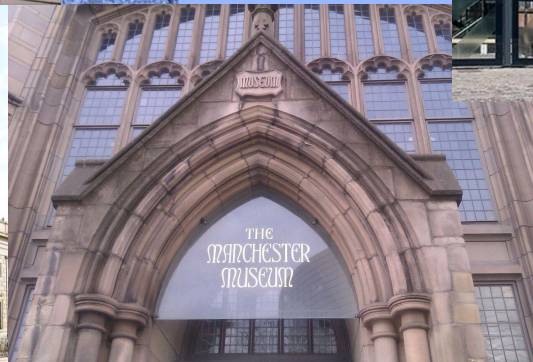
Hello again! It's us, the Creative Crew from Stanley Grove Primary Academy.  
Thank you for making hats for the Big Draw project,  
'What's on Your Mind Manchester?'

All the hats have been collected  
now and will be put into in  
buildings across Manchester,  
including....





...Manchester Art Gallery, the Whitworth, Z-arts,  
Central Library, Peoples History Museum, Portico Library,  
National Football Museum, Manchester Museum,  
John Ryland's Library or  
the Science and Industry Museum!

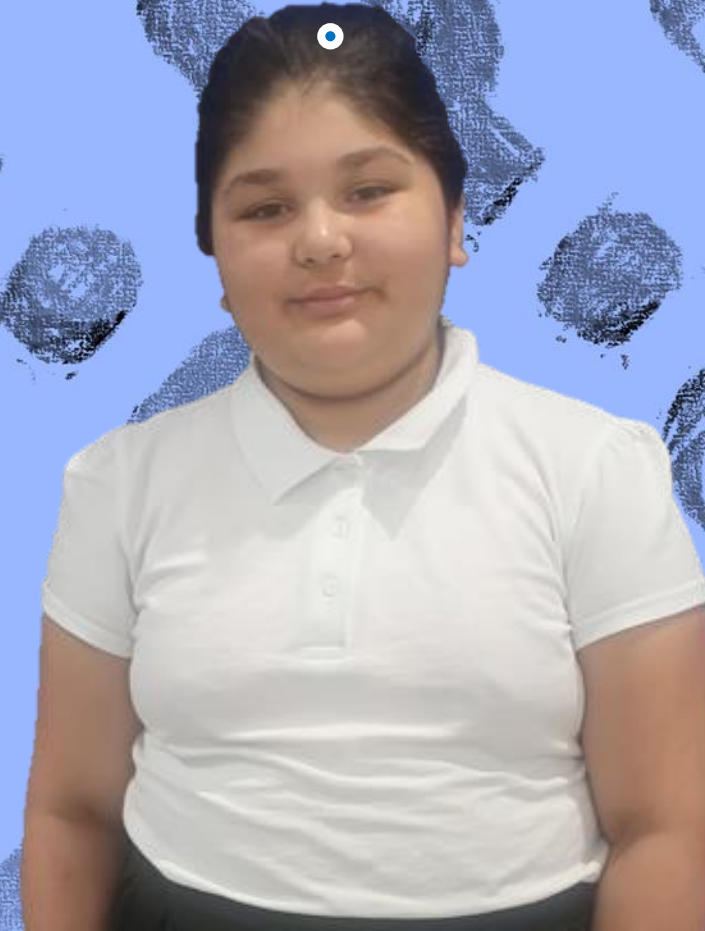
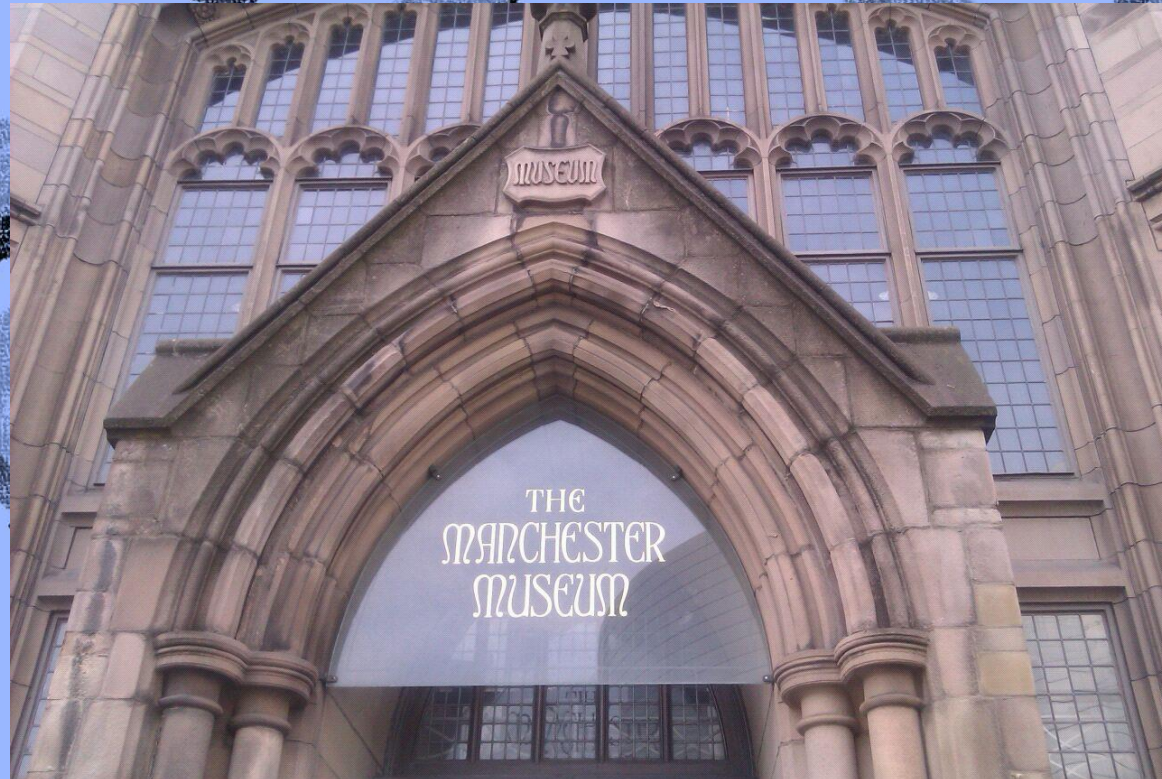




All the hats made by people in  
your school will be at the  
fantastic...

**Manchester Museum!**

Bring friends and family with you on  
Wednesday October 30<sup>th</sup> between  
11-4pm to see your hat and hundreds  
of others on display there.





To find your hat at  
The Manchester Museum, go  
through the front arch on  
Oxford Road.

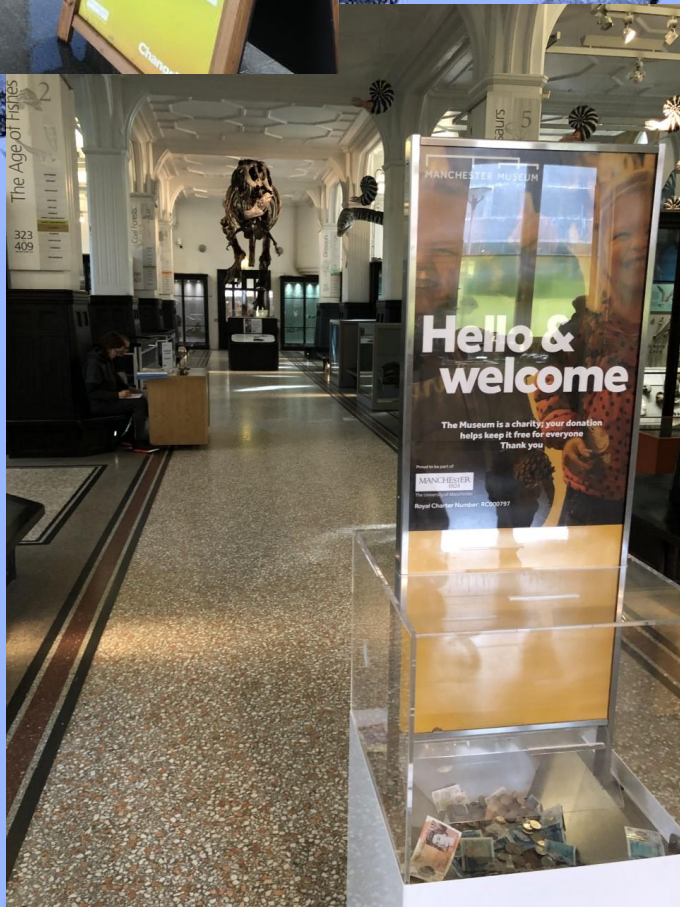
Follow the sign and turn left. You  
don't to pay to go in – it is FREE!







Go into the museum and wander round. The hats are on the first floor with Stan the dinosaur. If you don't find yours there, go upstairs where you will find them spread out among all the animal displays.





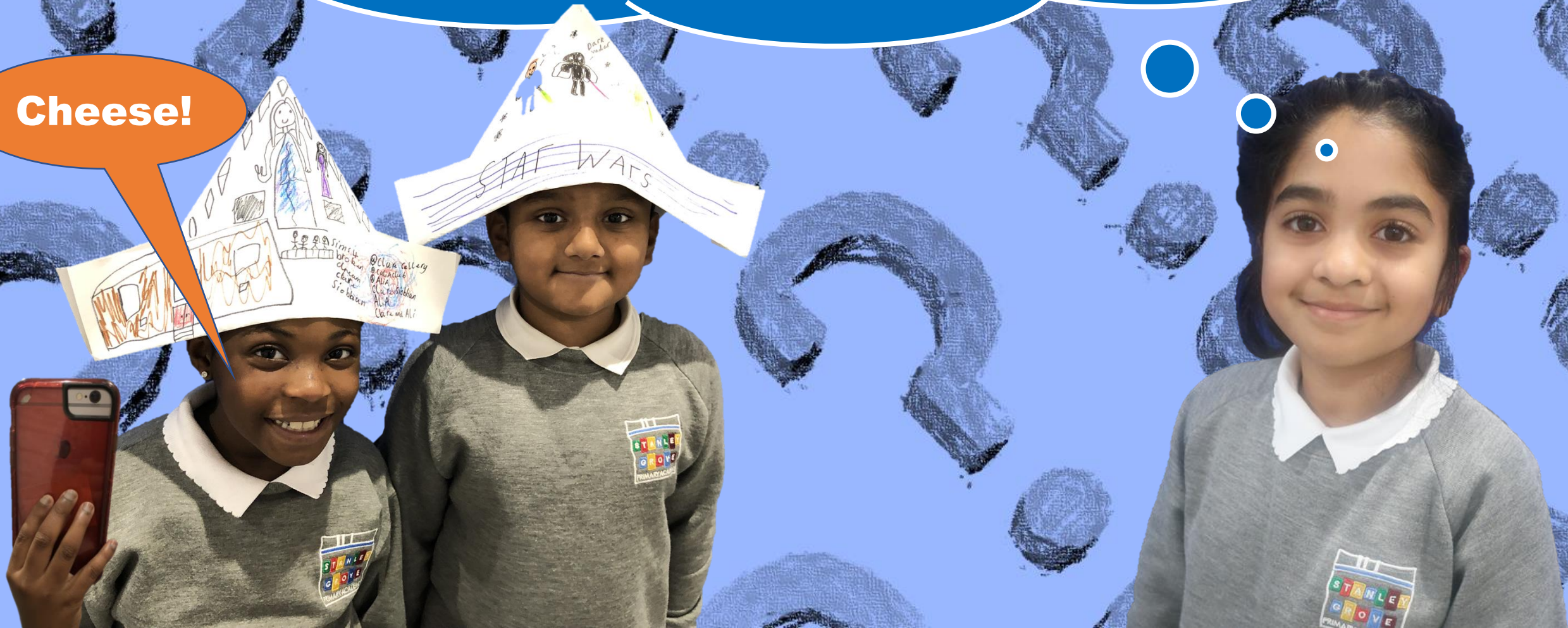
When you find your hat, take a selfie with it and post it online with the hashtag #WhatsOnYourMindManchester?

You can take your hat home, or leave it there for everyone else to enjoy.

There will be lots of other fun and creative stuff to do at the Manchester Museum on the 30<sup>th</sup> October, and it is all FREE!

So come and join in!

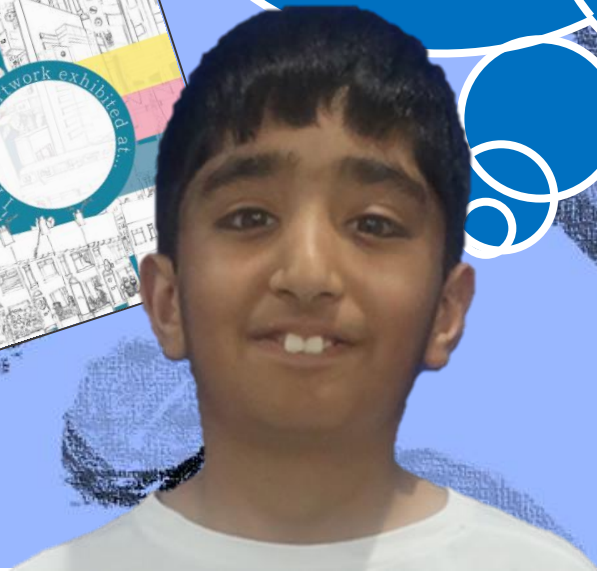
**Cheese!**





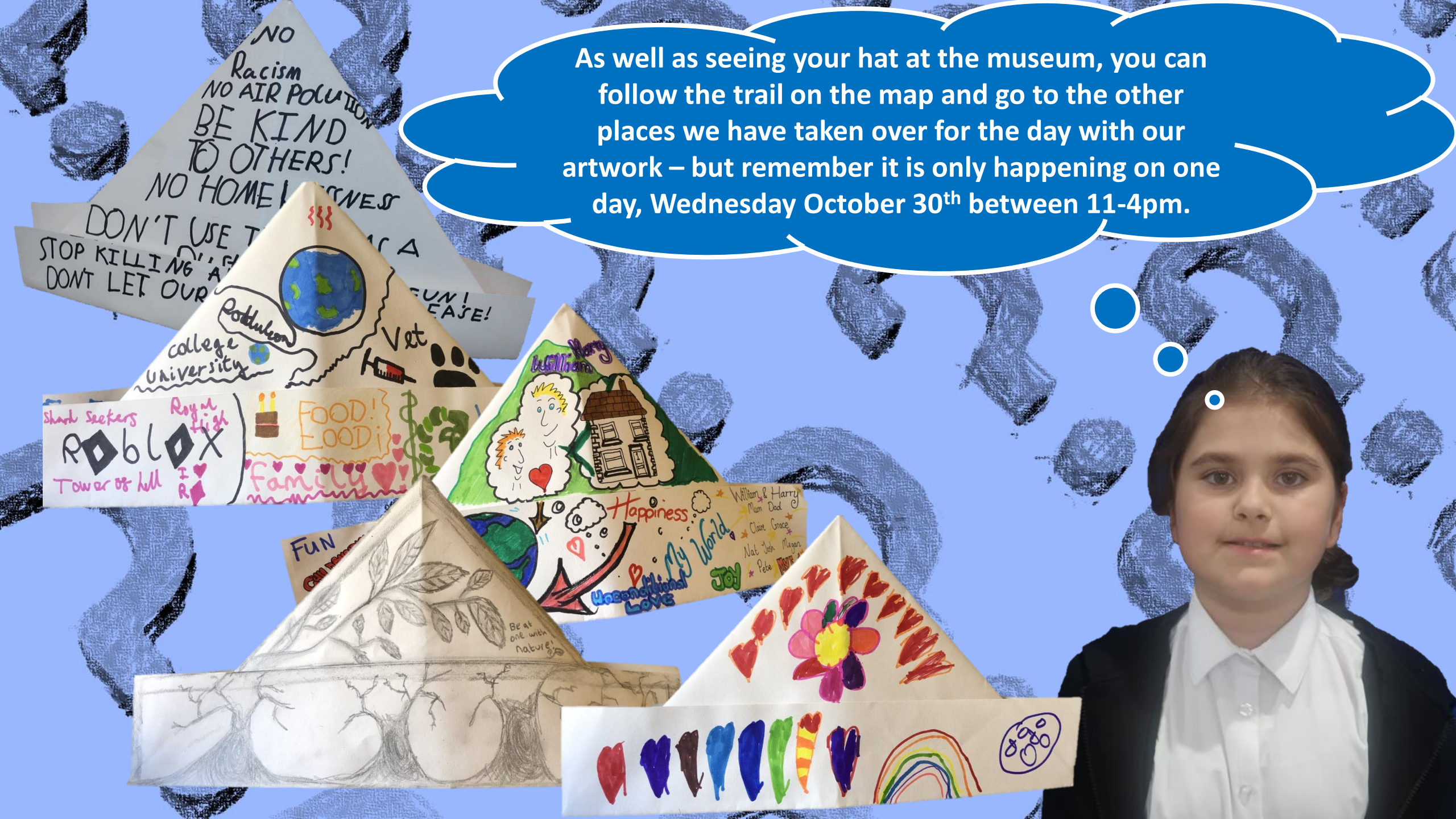


We have made a special maps for you. Only the artists who created hats will have a map. The map show all the places in the city where we have put the 10,000 hats. Draw a circle around the picture of the Manchester Museum, so you remember where your hat will be. Bring this map with you when you come and visit on 30<sup>th</sup> October between 11-4pm. Someone from our team will be there and will stamp it for you. They will also fill in the special certificate on the back as a souvenir. It will be great to chat with you!





As well as seeing your hat at the museum, you can follow the trail on the map and go to the other places we have taken over for the day with our artwork – but remember it is only happening on one day, Wednesday October 30<sup>th</sup> between 11-4pm.





**Thank you for your help and thank you for telling Manchester  
what's on your minds!**

**We hope you come to see your artwork and that you enjoyed the  
Big Draw 2019. Bye!**

