



‘Bee Manchester’

**An Across Manchester Project for the
Big Draw 2017**



Hello! I'm Emma and this is Judy. We work together for Stanley Grove Primary Academy. We create large art projects and you are going to BEE helping make a big art piece for Manchester.

It is going to BEE part of the BIG Draw which is a world wide celebration of drawing and art that takes place every October.



The title of the project is 'BEE Manchester'. It is an art work celebrating our community and our city at a time when we need to come together.



We are linking 18 schools, 16 libraries, Manchester Museum and the Whitworth Art Gallery to make a series of stop-motion animations which can be viewed around Manchester. In all, you and another 11,021 people are helping to make the animations!



We have made the frames for 21 animations using the famous Manchester bee logo and positive phrases describing qualities we need as a community. You are each going to decorate a frame which you will give back to us.

We will then photograph your frame and use it as part of one of the stop motion animations.



Here are the phrase we are using in the animations...

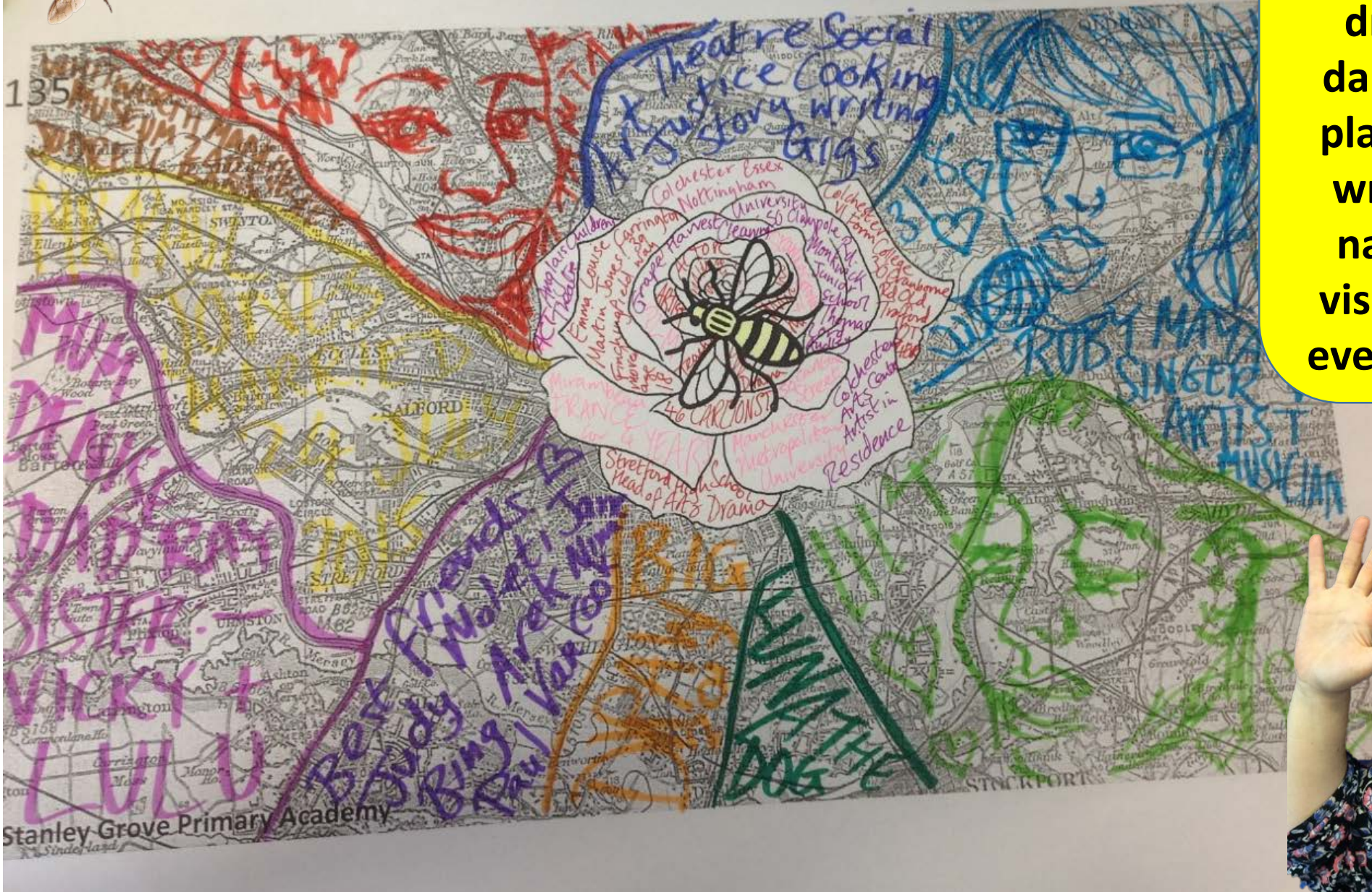
**BEE UNITED, BEE INSPIRED, BEE RESILIENT,
BEE UNIQUE, BEE HAPPY, BEE WELCOMING, BEE
POSITIVE, BEE CARING, BEE OPEN, BEE STRONG,
BEE CALM, BEE GENEROUS, BEE UNDERSTANDING,
BEE BOLD, BEE DETERMINED, BEE GIVING,
BEE CONFIDENT, BEE CURIOUS, BEE KIND,
BEE OURSELVES, BEE LOVING, BEE UNAFRAID,
BEE THOUGHTFUL, BEE FRIENDLY, BEE PEACEFUL,
BEE COURAGOUS, BEE SYMPATHETIC, BEE FEARLESS,
BEE TOGETHER, BEE FUNNY, BEE INFORMED,
BEE PROUD, BEE INSPIRATIONAL, BEE ENGAGED,
BEE COMPASSIONATE, BEE TALENTED, BEE CREATIVE,
BEE HISTORIC, BEE RESPECTFUL, BEE FORGIVING,
BEE HONEST, BEE DIFFERENT....
BEE MANCHESTER!**



So now we need you to decorate and personalise your individual frame for your school's animation. Decorate your frame with lots of colour, using any art materials you like. We also want you to make it personal to you. You can graffiti words about yourself, your family, friends, things you love and are important to you. The things that make you 'you'! If English isn't your first language feel free to write words in other languages you speak. You could also draw all these things on if you don't want to use words.

When your frame becomes part of the animation it will only be seen for a split second. It will just be a blur of colour but you will know you have put something of yourself into the project. And don't worry if you make a mistake- no one will see it! Have a look at the example we have made, but remember BEE CREATIVE and BEE UNIQUE- don't just copy ours!





A woman with dark hair and glasses, wearing a black floral patterned shirt and a green lanyard, is waving her right hand. The background is white with a yellow triangle and a map fragment on the left.

When you have finished make sure your frame gets handed back, ready for us to photograph.

**You can see all the finished animations during the last week of October.
Pictures of your school's logo will be displayed in lots of places around Manchester city centre which have connections to bees. You download a free app called Aurasma. Aurasma uses Augmented Reality (AR). It will recognise your logo and trigger your film which will start playing on your phone or tablet. You can have a look at all the other films and anyone visiting Manchester will be able to see them as well!**



To help you find yours and the other 20 films, we have created a Bee Map. We will give you all a Bee Map when we collect your artwork. Here is our lovely Bee Map...



We will also give you an invitation to a special celebration called 'Bee Together' which is for anyone who has contributed to the project to come and enjoy with their families. It is on Thursday 26th October 1-4pm

There will be artists, scientist, musicians, bee keepers, guests from Jodrell Bank, the Whitworth and Manchester Museum, you can taste honey, make your own smoothies and even train with the Belle Vue Bees rugby team. All for free!



Stanley Grove Primary Academy Presents....

BEE Together

CREATIVE FAMILY FUN DAY!

Meet Artists, Bee Keepers, Scientists and Musicians

Make Art Bee Hotels, Bees Wax Candles and Friendship Bracelets.

Guests include... The Manchester Museum

All Activities and Refreshments FREE!

At Stanley Grove Primary Academy M12 4NL

Thursday 26th October 1-4pm

ALL Welcome

THE BIG DRAW
DRAWING CHANGES LIVES

A map of Manchester is visible in the background of the poster, showing the city's layout and surrounding areas.

You can also come and see us at Manchester Museum and the Whitworth on Saturday 14th October, where you can help make more frames if you like!

We hope you enjoy BEE-ing part of this project!

