

## PARENT SUPPORT GROUP

Would any Parents/Carers be interested in leading a support group on a termly basis here in school, for Parents/Carers of children on the Autistic spectrum, from September 2015?

It would be great to link up with neighbouring schools who have recently set up similar groups.

Please contact Helen Woolf if you would be interested in taking the lead on this in school.

## SEND at Oswald Road

### MEET OUR FANTASTIC TEAM!

Our school SENCo, Helen Woolf, is Oswald Road's Acting Deputy Headteacher and a member of the School Senior Leadership Team.



Helen is currently studying for the National Award for Special Educational Needs Co-ordination at Manchester Metropolitan University. She is responsible for co-ordinating SEND provision across the school, from Nursery all the way up to Year 6.

Helen is also a member of the SENCo Chorlton School Cluster with whom she meets regularly every half term to share good practice.

Debbie Carter is our Pastoral Lead, providing and coordinating pastoral and nurture groups. She works closely with families here in school.

Debbie is available at the beginning of each day, providing a daily drop in session for Parents and Carers.

Our SEND support staff deliver both maths and English interventions to both individual children and small groups.

Our support staff work across all key stages, in all year groups from Nursery to Year 6. Certain members of our SEND support staff (see left) are employed to support individual children:

- Alex Cairns
- Karen Whittick
- Yasmin Atif
- Kelly Nash
- Joanne Dale
- Suzanne Murray
- Tom Edney
- Claire Griffiths
- Lorraine Fay

*Every Child*

*Every Chance*

*Every Day*

**27 March - 2 April 2015**

# WORLD AUTISM AWARENESS WEEK



**Stand out  
for autism!**

  
The National  
Autistic Society

Visit [www.autism.org.uk/waaw](http://www.autism.org.uk/waaw)



## SEND PARENT FORUM - SPRING 2015

Our termly SEND Parent Forum was held in Spring 1. The focus for discussion was the new SEND Code of Practice 2014 and how changes are being implemented here at Oswald Road Primary School.

Mary Merritt, Parental Engagement Officer, from the Early Help Team at Manchester LA, attended the event to provide further information about Manchester LA's Local Offer. The PowerPoint delivered at the session is available on our website under our inclusion banner. Details of our Summer SEND Parent Forum will be shared with Parents/Carers after the Easter holidays.

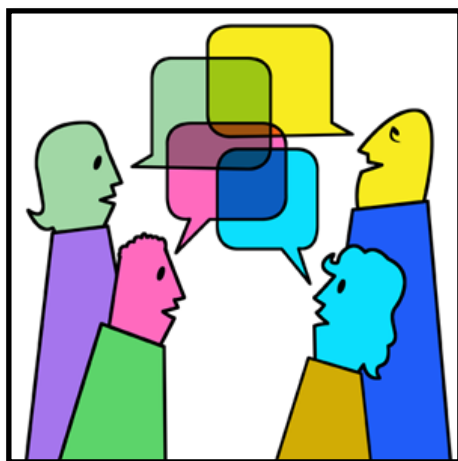


Department  
for Education



Department  
of Health

## PARENTAL FEEDBACK



**"Interesting to hear** how school and teaching strategies have adapted around the new SEND Code of Practice."

**"Very useful to understand** what the school are doing and how they are working with SEND children."

**"The forum was educational and helpful.** The PowerPoint presentation was clear and to the point."

**"Great that school is so on top of things** and transparent about its SEND information. Please keep these forums going - very useful."

**"Sounds very much that Oswald Road is going above and beyond what is expected."**

## COMING SOON TO OSWALD ROAD 'ACTION FOR BRAIN INJURY WEEK'

When a child's brain is injured, they might need more help than before. Family, friends and caring professionals make a huge difference and often don't get the recognition they deserve.

The Child Brain Injury Trust is celebrating these unsung heroes this year. Can you help?

Make a donation to the charity and don your mask or tiara to get involved in our "Heroes and Princesses" dress up day on:

**Friday 22<sup>nd</sup>  
May**



**Autism  
Awareness  
Assembly**



For World Autism Awareness Week 2015, children at Oswald Road Primary School shared a poem to help raise awareness and support of those whose lives are touched by the condition.

‘On World Autism Day’ is written by poet Donna Woods, who writes very moving and thoughtful poetry inspired by her son, Ben.



Today is World Autism Awareness Day  
But it's only a day for you  
Autism is with us every day  
So spare a thought, please do

Life for us is an uphill struggle  
We face challenges every day  
Autism will always be with us  
It will never go away



It's important to raise awareness  
To help others understand  
We also need acceptance  
And a helping hand



Autism is a long journey  
That will never come to an end  
It has its ups and downs  
It's a never ending bend



If you don't understand Autism  
Please take some time to find out  
It makes life so much easier  
If people know what its all about



Don't be afraid of Autism  
You never know when it may touch you  
Today is World Autism Awareness Day  
So spare a thought, please do

