



Who Is The Thief?

This game is to help your child learn **who**, **what** and **where** questions.

You will need some soft toys and some bags or boxes for this game. You will also need the treasure pictures attached. To set up the game put the soft toys around the room making sure they have a bag or box near them to hide the pictures in.

Cut out the pictures and place them in front of your child. Tell your child a story about some naughty toys who are going to try and steal some of the treasure. Ask your child to close his or her eyes and then take a treasure picture and hide it near one of the soft toys. Ask your child to open his or her eyes and look at the treasure pictures. Then ask '**What** is missing?'

Once your child knows what to look for let him or her run and find the missing picture. Remember to ask '**Who** took it?' and '**Where** did you find it?'

Let your child be teacher and hide the picture for you to find. Try to encourage your child to ask you the questions using the right question words.

Variations:

To make this game easier just work on **who** and **what**.

To make this game harder use more toys and more treasure.





Who Is The Thief



Copyright ©2020 Speech Link Multimedia Ltd



Copyright ©2020 Speech Link Multimedia Ltd



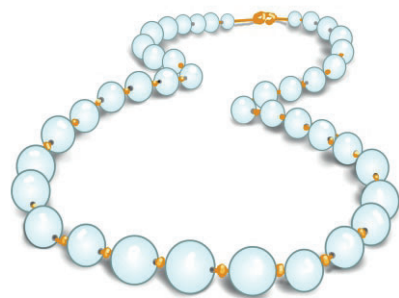
Copyright ©2020 Speech Link Multimedia Ltd



Copyright ©2020 Speech Link Multimedia Ltd



Copyright ©2020 Speech Link Multimedia Ltd



Copyright ©2020 Speech Link Multimedia Ltd